

Explorer With Locked BLTG



247

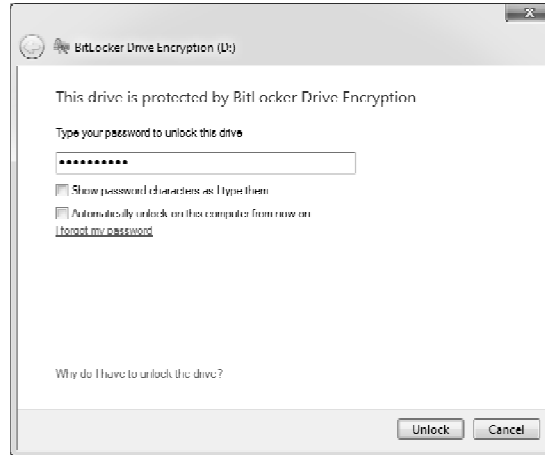
Using the BL-ed Device

- Until you remove it from your computer, you can read and write without any obstacle
- If you remove and reinsert it (or insert it in any other computer), then you must "unlock" it:
 - Specify a key file
 - Specify a "numeric password," the 48-digit recovery key
 - Enter the password you created, or swipe your smart card

248

Unlocking a Removable Device

- Punch in the password, click "Unlock" and you can access it
- Or use the CLI from an elevated command prompt



Note option to auto-unlock in the future

249

Explorer With Unlocked BLTG



250